

Men of Faith

*Tuesday, November 11, 6:30 - 8:00 pm
Fellowship Hall, Bldg. 3*

All men are invited to a study about the smartest and strongest men who ever lived; Solomon and Samson. Dinner will be served. Guys of all ages are welcome!

GROW 1

We will be holding a complete Grow 1 class on Saturday, November 15 from 9 am–12 Noon in the Chapel. A classes will be combined into one session. Coffee, juice, and doughnuts will be provided. For more information, contact Ronna 543-2700.

The church offices will be closed on Thursday, November 27 and Friday, November 28 for the Thanksgiving holiday.

WOMEN OF FAITH UPCOMING MEETINGS

Several changes have been made in the dates and places over the next few months for our Women of Faith ministry. Be sure to mark your calendars appropriately so you don't miss out!

November 1

Meet in the Chapel, Bldg. 1 for this month only! All ladies are invited from 10am-12 noon and brunch will be served. **Childcare will be provided at the North Campus, Bldg. 3. Stop there first.**

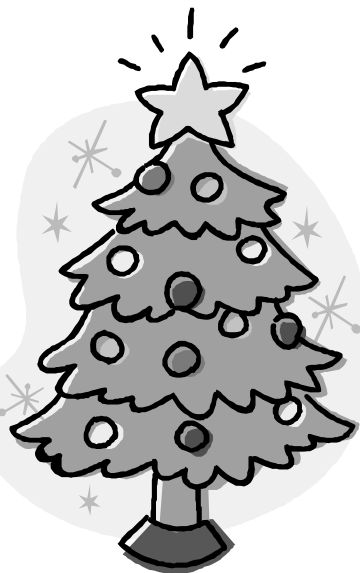
December 6

We will be back in the Auditorium of Bldg. 3 for our 10 am-12 noon Christmas Story brunch. As usual, childcare will be provided up to 5th grade.

January 10, 2009

NOTE THE DATE CHANGE for this month only! Join us for brunch from 10am-12 noon as we launch A New Beginning. Childcare will be provided up to 5th grade.

Any questions, please call Tammy at 543-2700.



CHRISTMAS GIVING TREE

It's that "hap-happiest season of all" again! The Giving Tree will be in the lobby from December 7 through December 21 as our way of reaching out to families within our church body during the holiday season.

If you would like to purchase a gift for a family in need, stop by our giving tree and pick up a gift tag. There will be someone there to assist you. All you have to do is register your gift with the helper, buy and wrap your gift and return it with the gift tag on the outside of the package.

Deadline to return packages is December 21.

